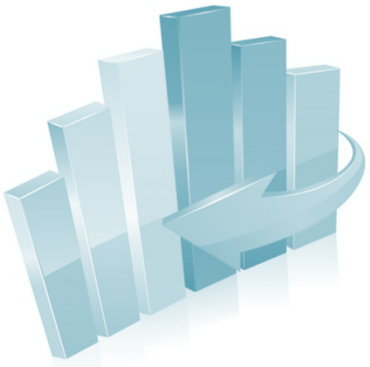


FNP Data Analysis International Report

(Data - 31st December 2018)



Overview

SECTION 1 - Context

SECTION 2 - Client Caseload and Characteristics

SECTION 3 - Programme Activity and Fidelity

SECTION 4 - Short-Term Outcomes

Section 1

Context

Births to mothers under 20

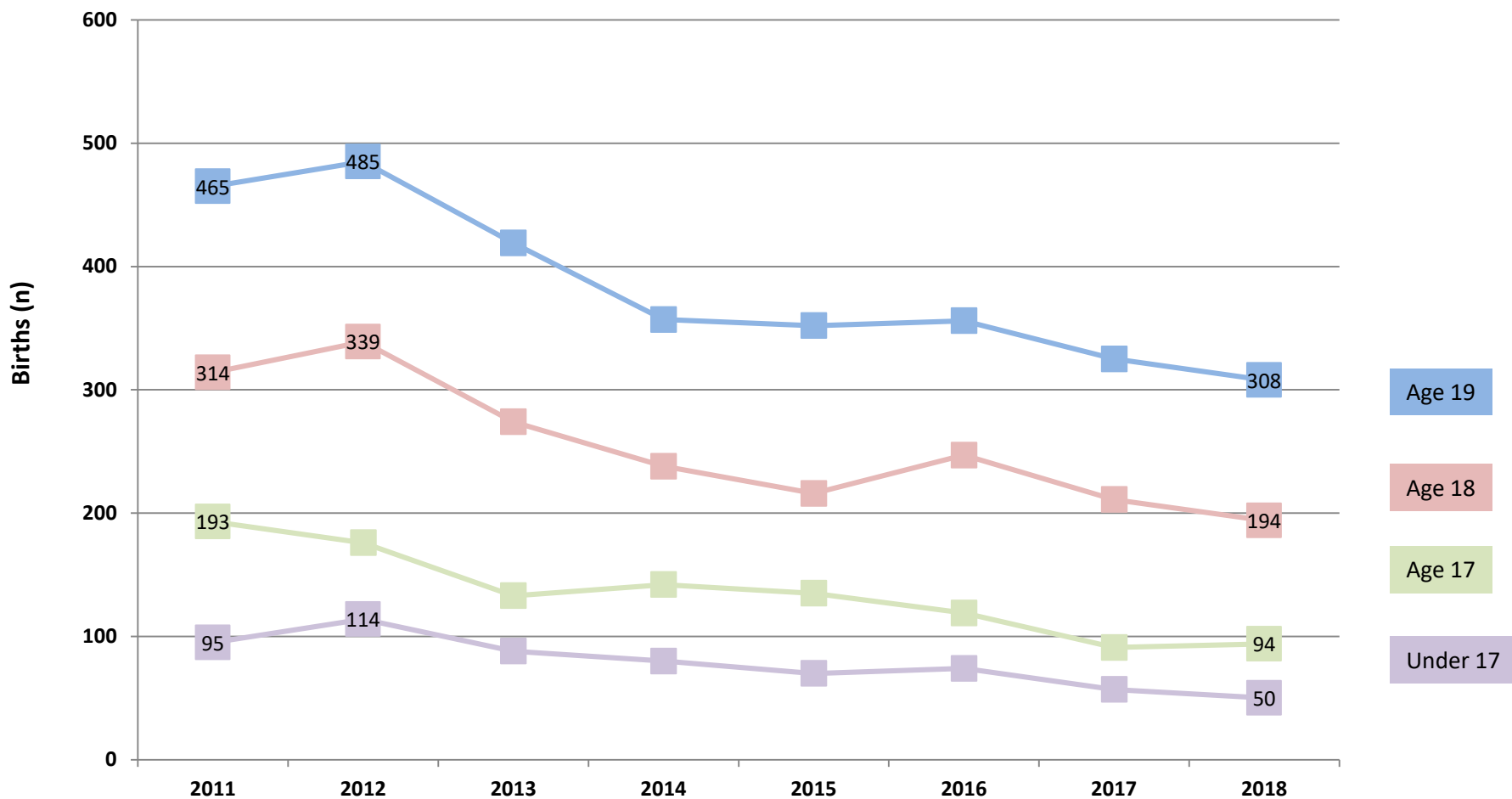




Births to Teenage Mothers

Average 150 births per year 2011-2018 to mothers ≤ 19 .

Number and rates declining. Source: NIMATS

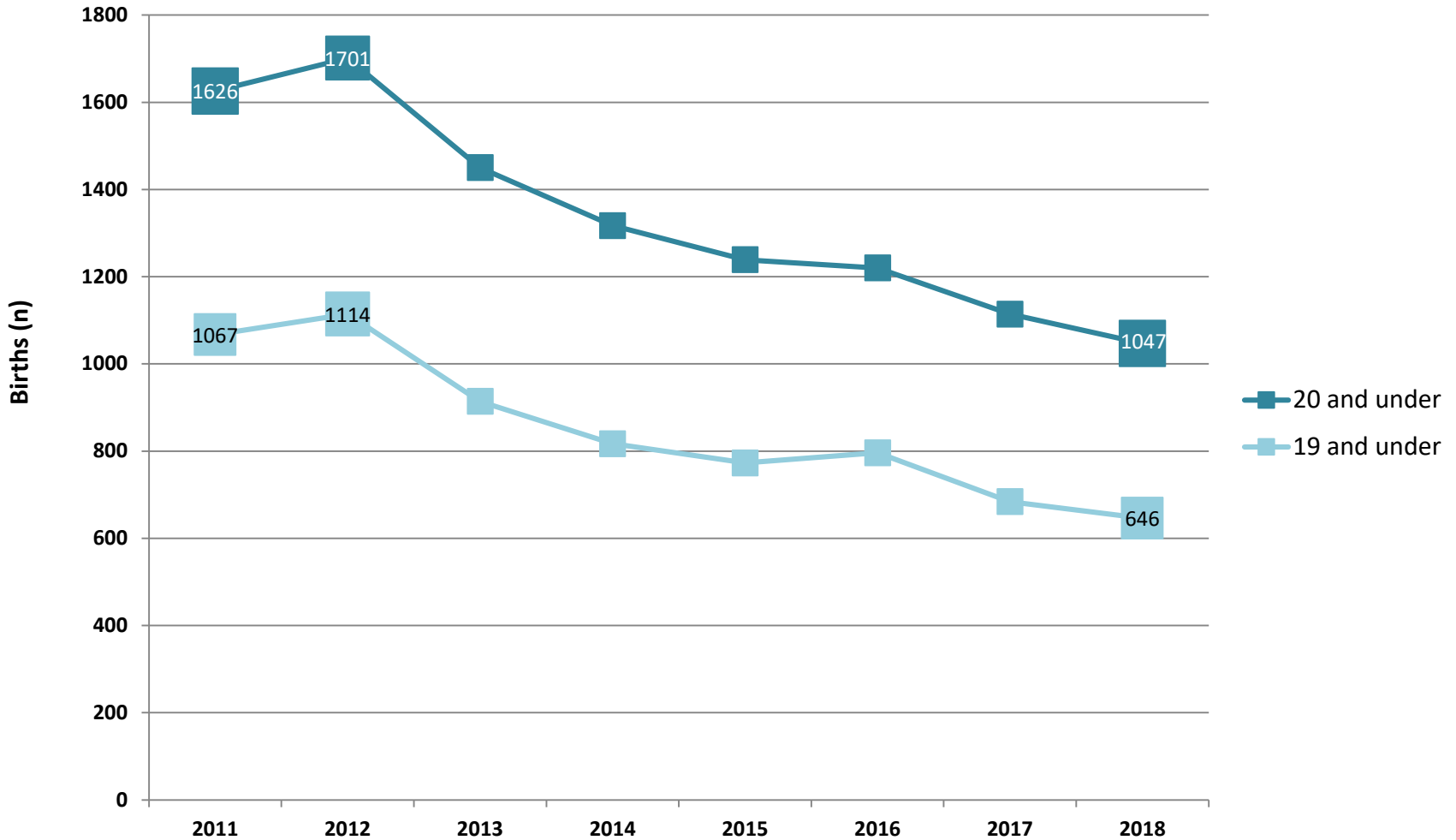




Births to Teenage Mothers

Average 150 births per year 2011-2018 to mothers ≤ 19 and ≤ 20 .

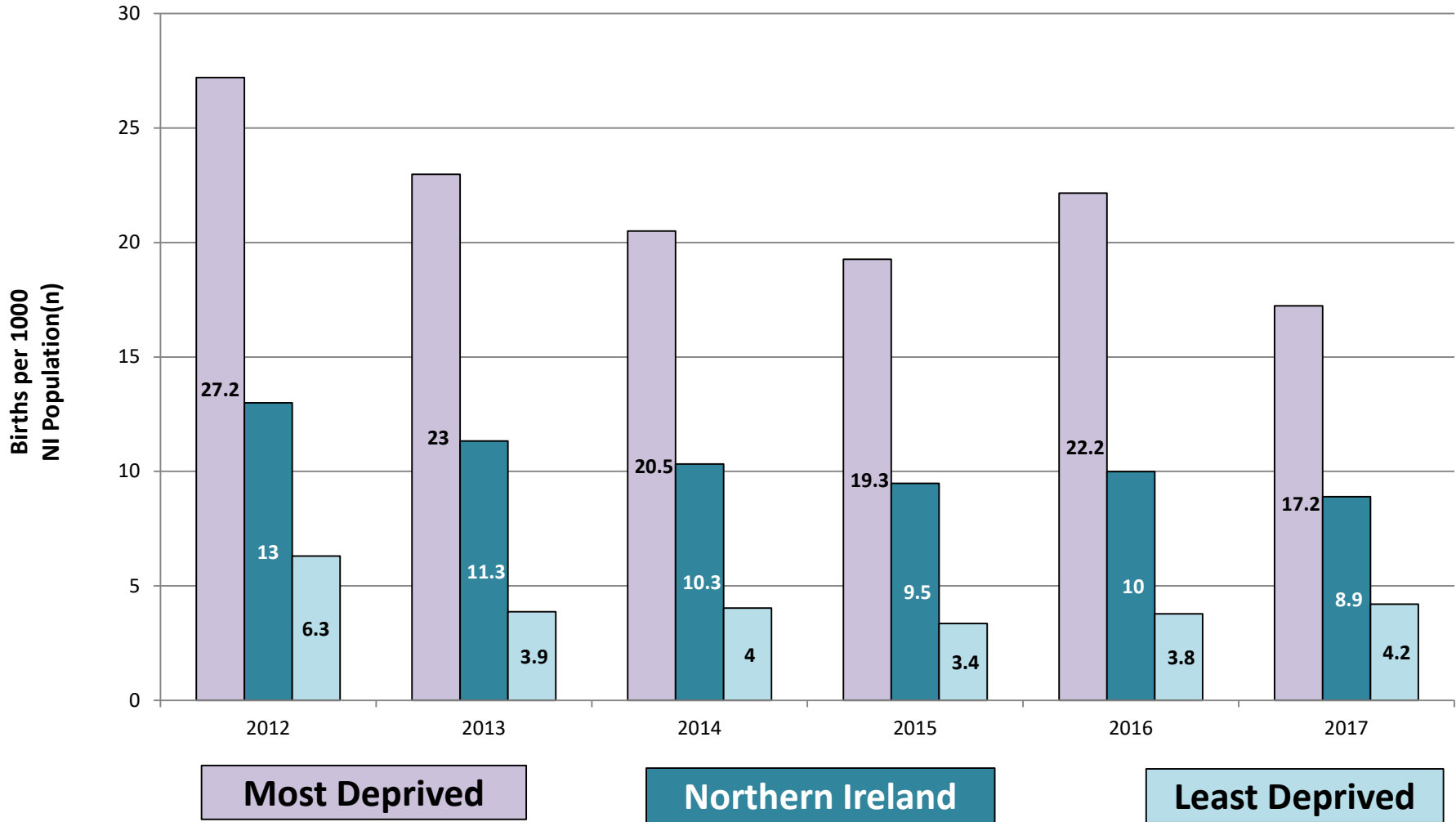
Number and rates declining. Source: NIMATS





Births to Mothers <20 Years

Inequality gap: Health Inequalities Annual Report 2018



In 2017 the under 20 teenage birth rate in the most deprived areas was 4 times the rate in the least deprived areas.

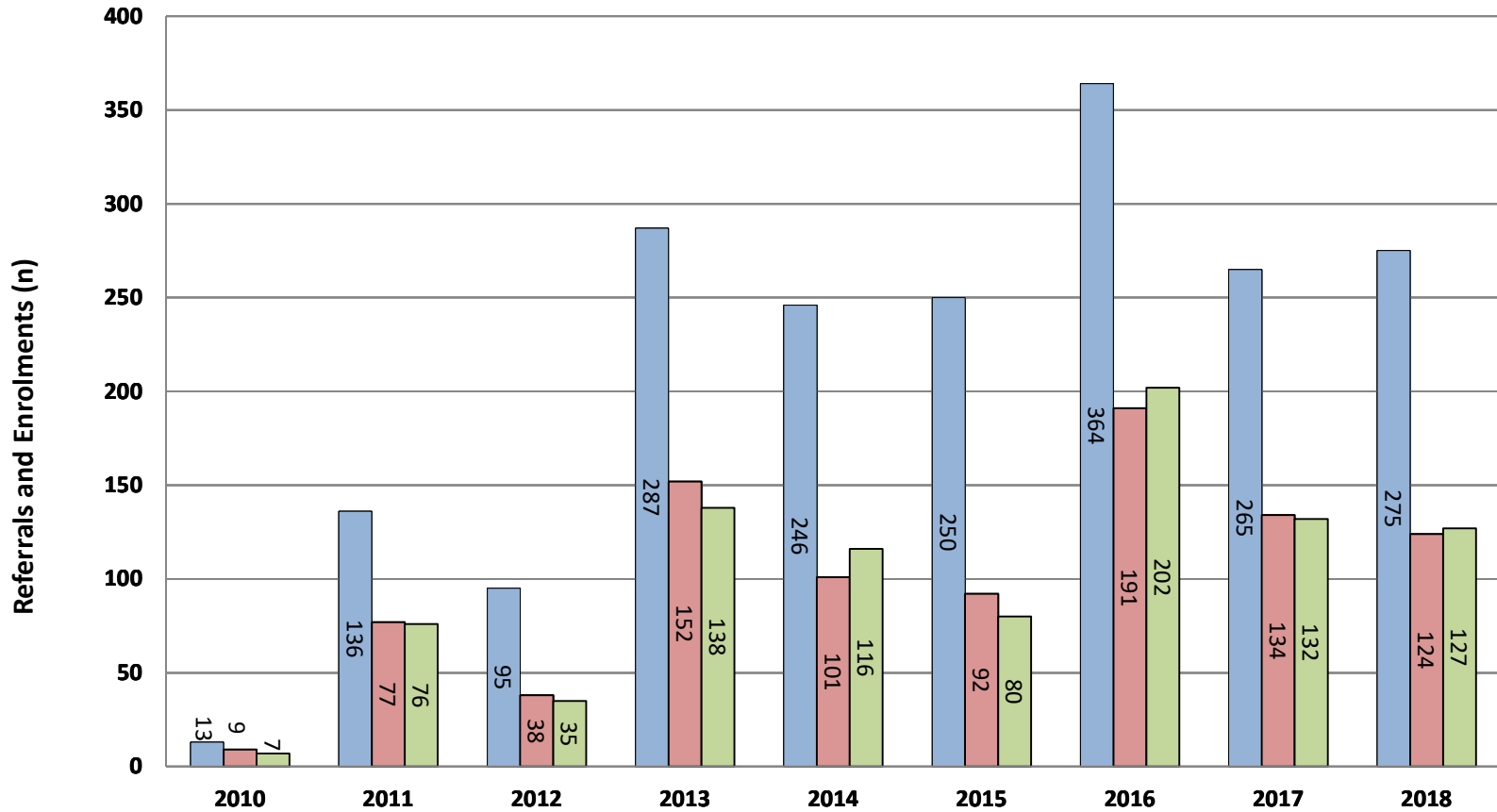
Section 2

Client Caseload and Characteristics



Referrals and Enrolments

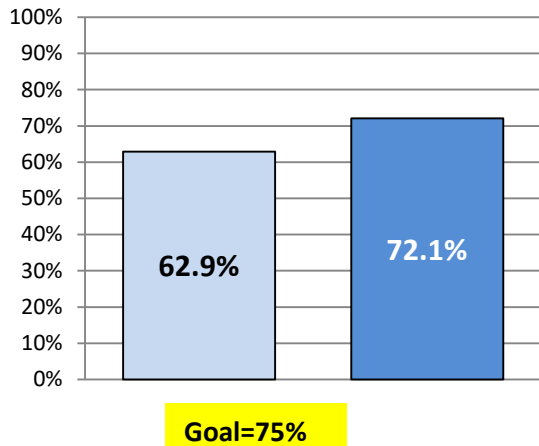
Total referrals **1931**
 Enrolled by year referred **918**
 Enrolled by Dec 2018 **913**
 % Eligible clients enrolled by Dec 2018 **72.1**



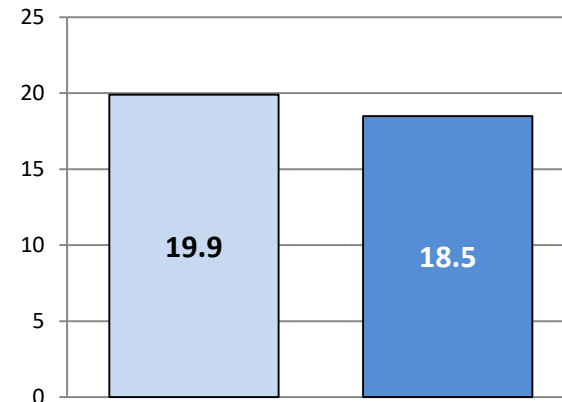
Year	% Eligible Clients Enrolled
2010	100%
2011	75.5%
2012	74.5%
2013	72.7%
2014	73.7%
2015	73.6%
2016	72.9%
2017	74%
2018	62.9%
Goal	75%

How well did referral and recruitment work?

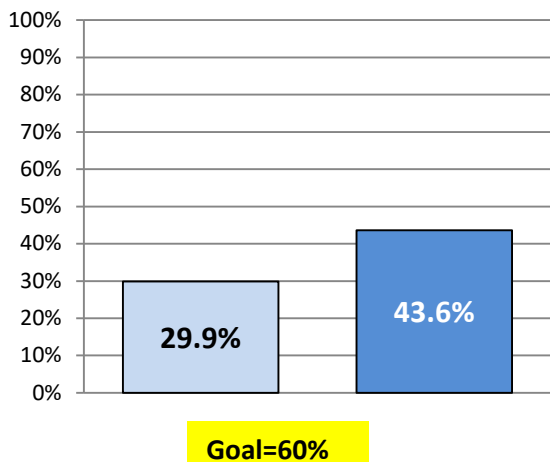
% Definitely Eligible Enrolled*



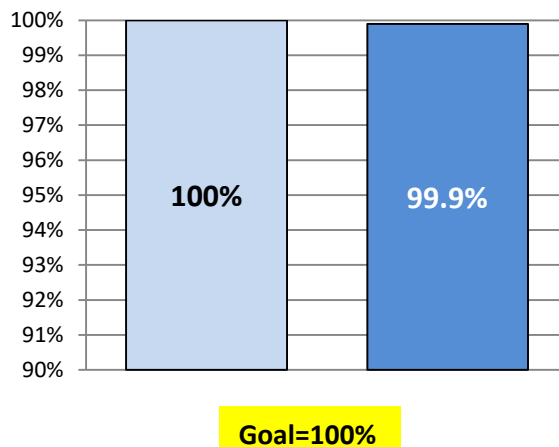
Average Weeks Gestation at Enrolment



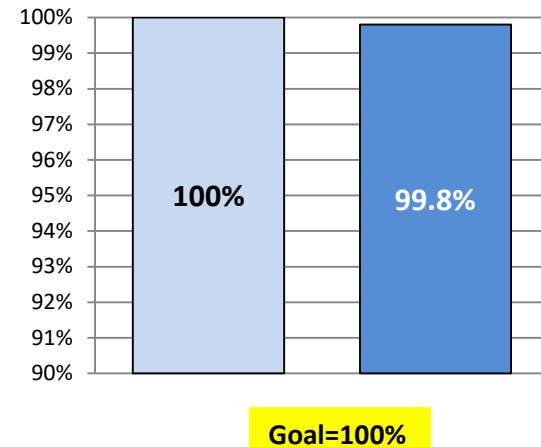
Enrolled by 16 weeks Gestation



Enrolled by 28 weeks Gestation

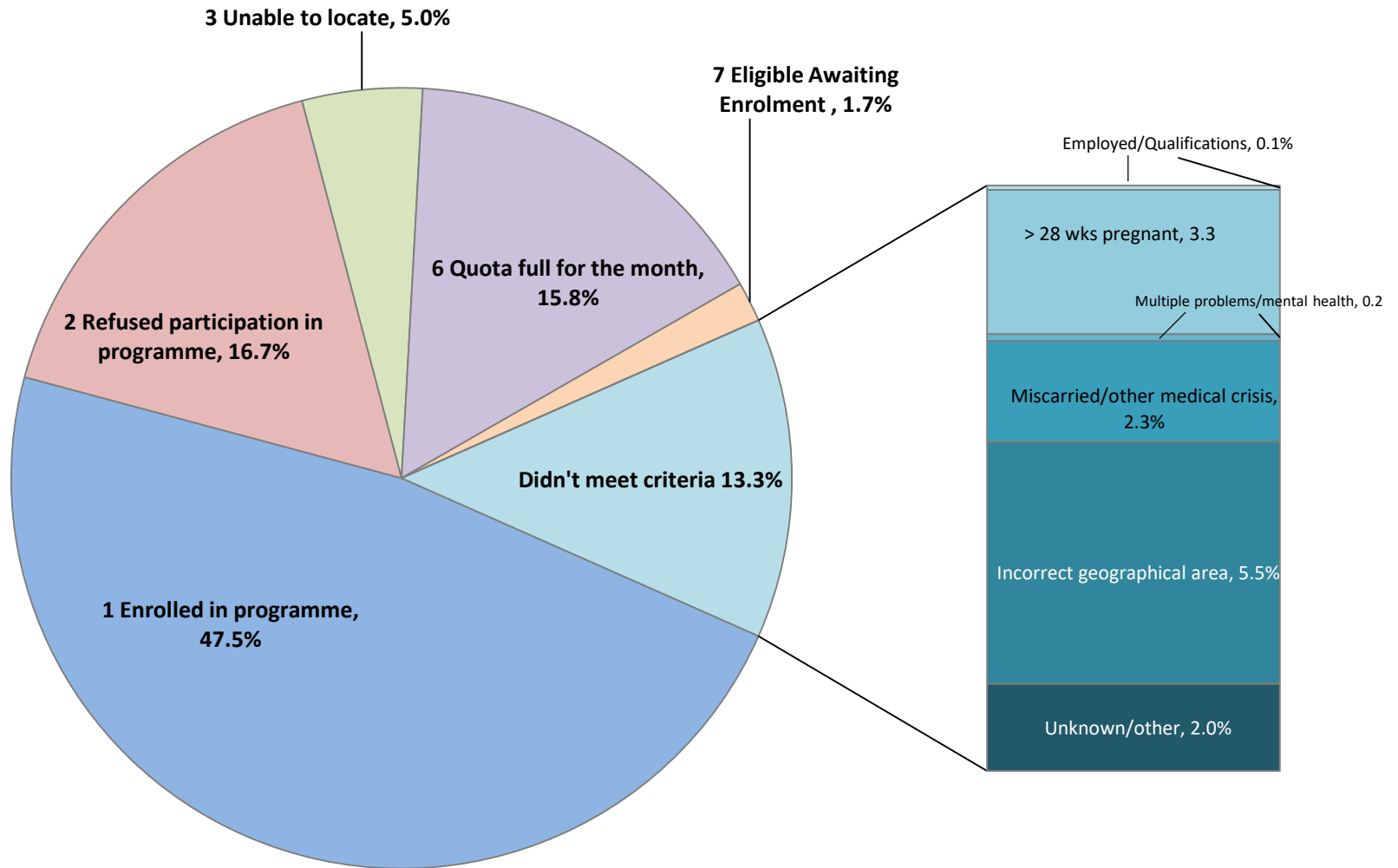


Aged ≤19 years at LMP

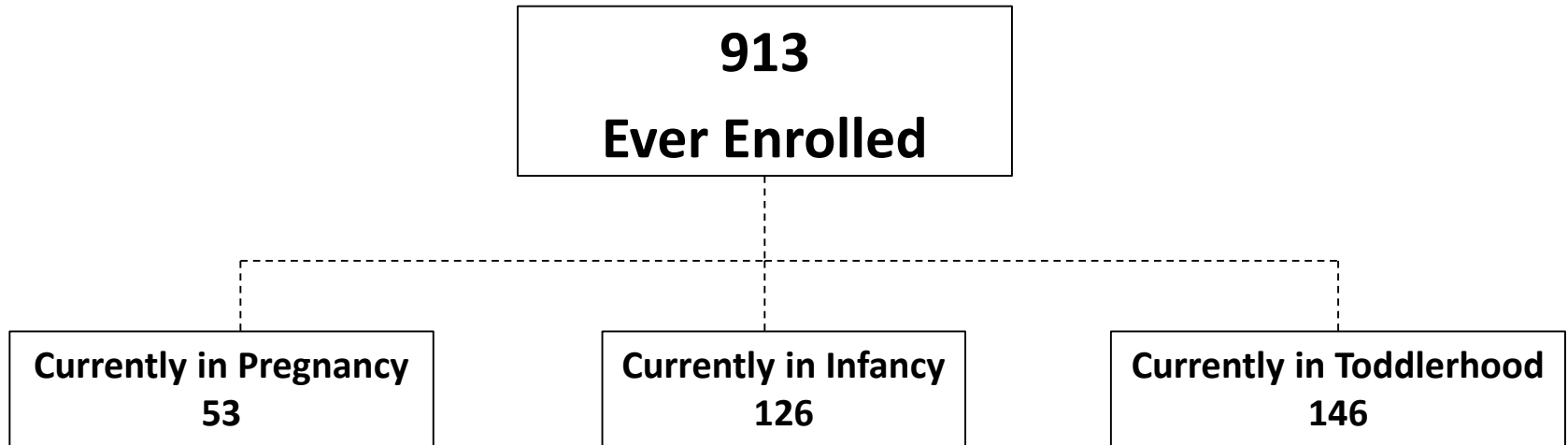


* Total definitely eligible calculated as: total referrals minus not eligible (not eligible [all reasons [4a-ff] and not recruited unable to locate [3], [language issues [5], Quota full for the month [6])

Outcome of Referrals to FNP NI (2010-2018)



Caseload at 31.12.2018



Client Profile – FNP Data



FNP DATA

- Age at LMP
- Ethnicity
- NEET at intake
- Income

Client Profile - FNP



AGE at LMP

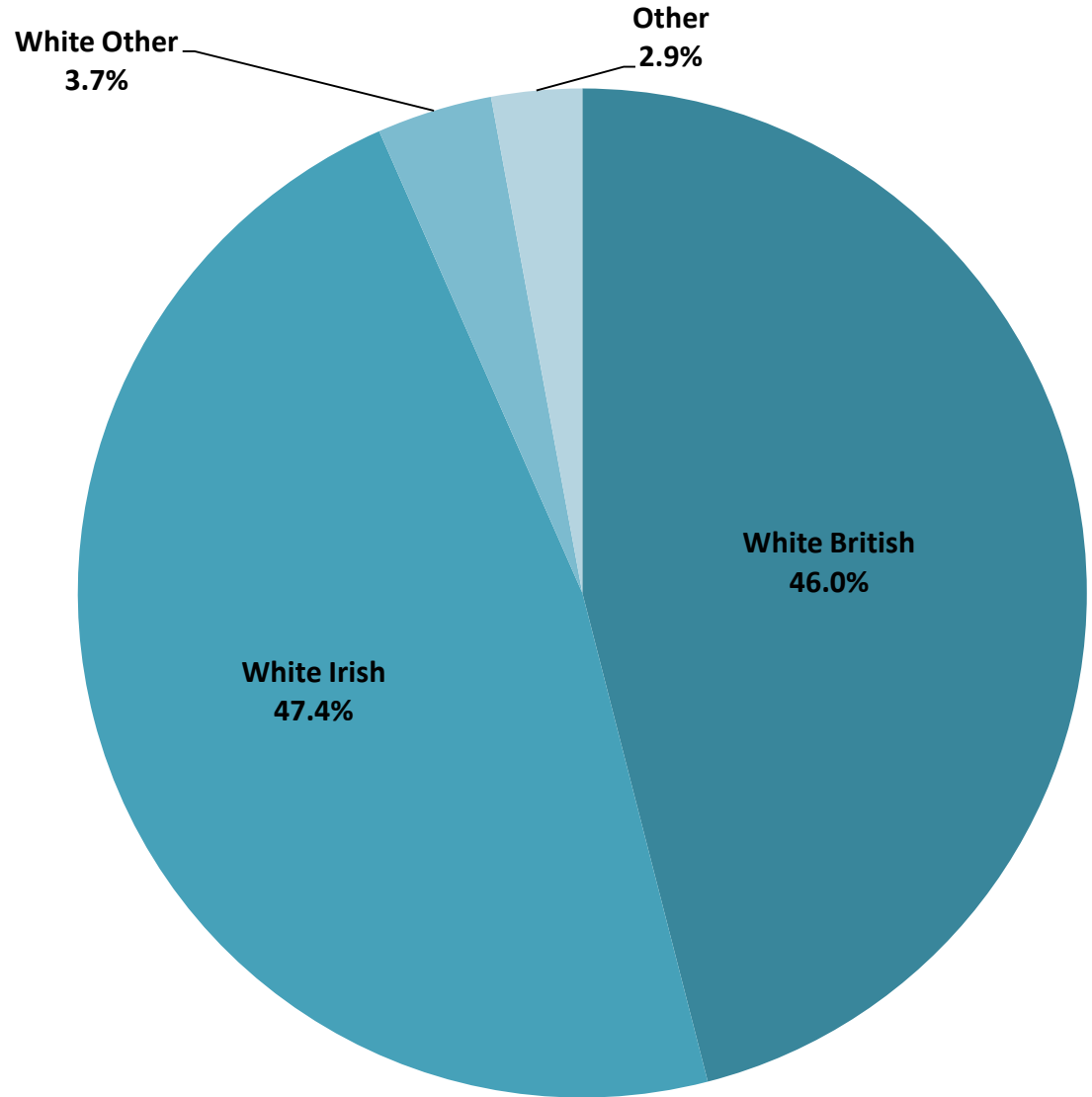


- 99.8% (N=911) of clients were aged 19 or under at LMP.
- Goal = 100%
- 0.2% (N=2) clients were aged 20 at LMP.

Client Profile - FNP



ETHNICITY

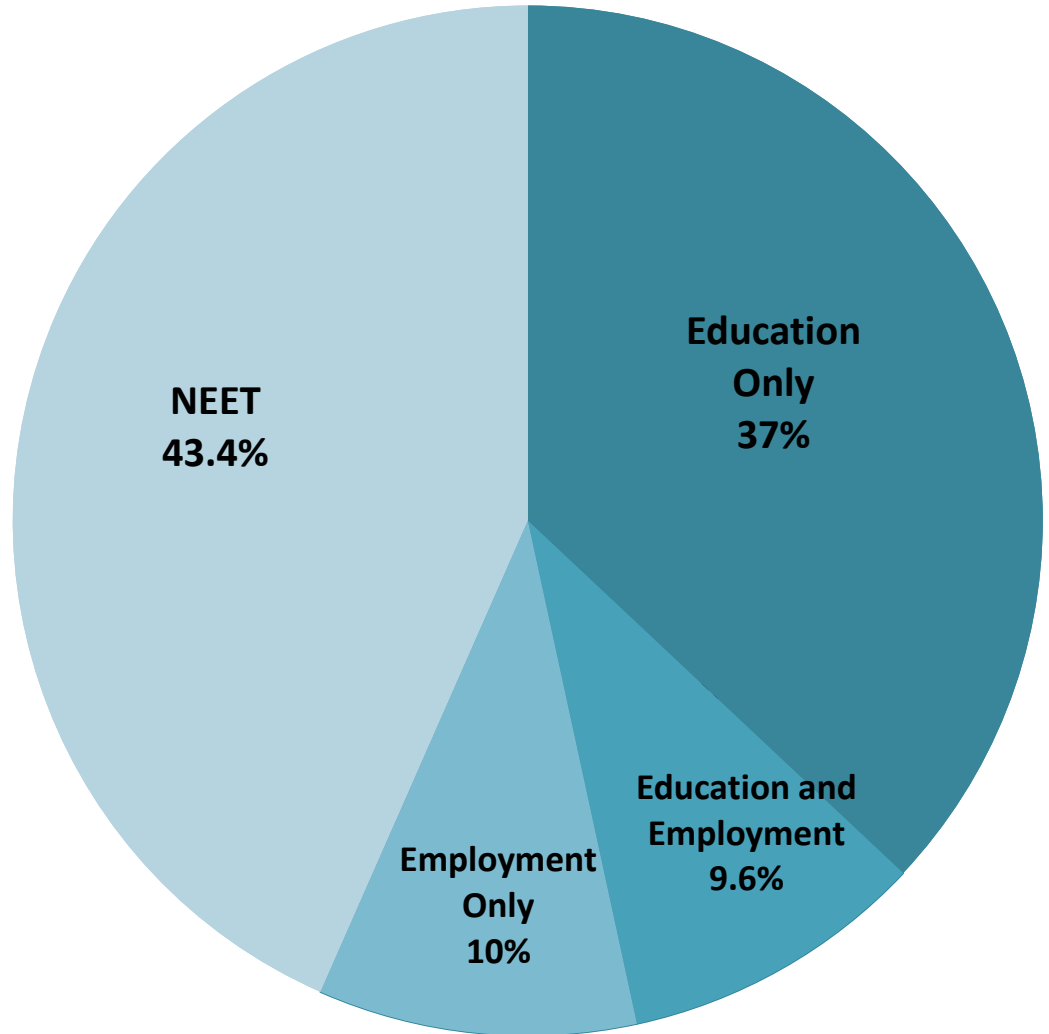


Data Quality 90+% coverage

Client Profile - FNP



EDUCATION and EMPLOYMENT Intake



Data Quality 90+% coverage

Client Profile - FNP



INCOME



79.8% < £13,000 p/y

Data Quality 90+% coverage

Client Profile - NIMATS



**FNP v's Non
FNP
NIMATS**

Northern Ireland Maternity System (NIMATS)

- Births to first time mothers aged 20 and under.
- FNP NI Clients v's non FNP NI Clients.
 - First language
 - One parent family
 - Proportion of young mothers FNP is able to support (2018 Births).
 - Deprivation

Client Profile - NIMATS

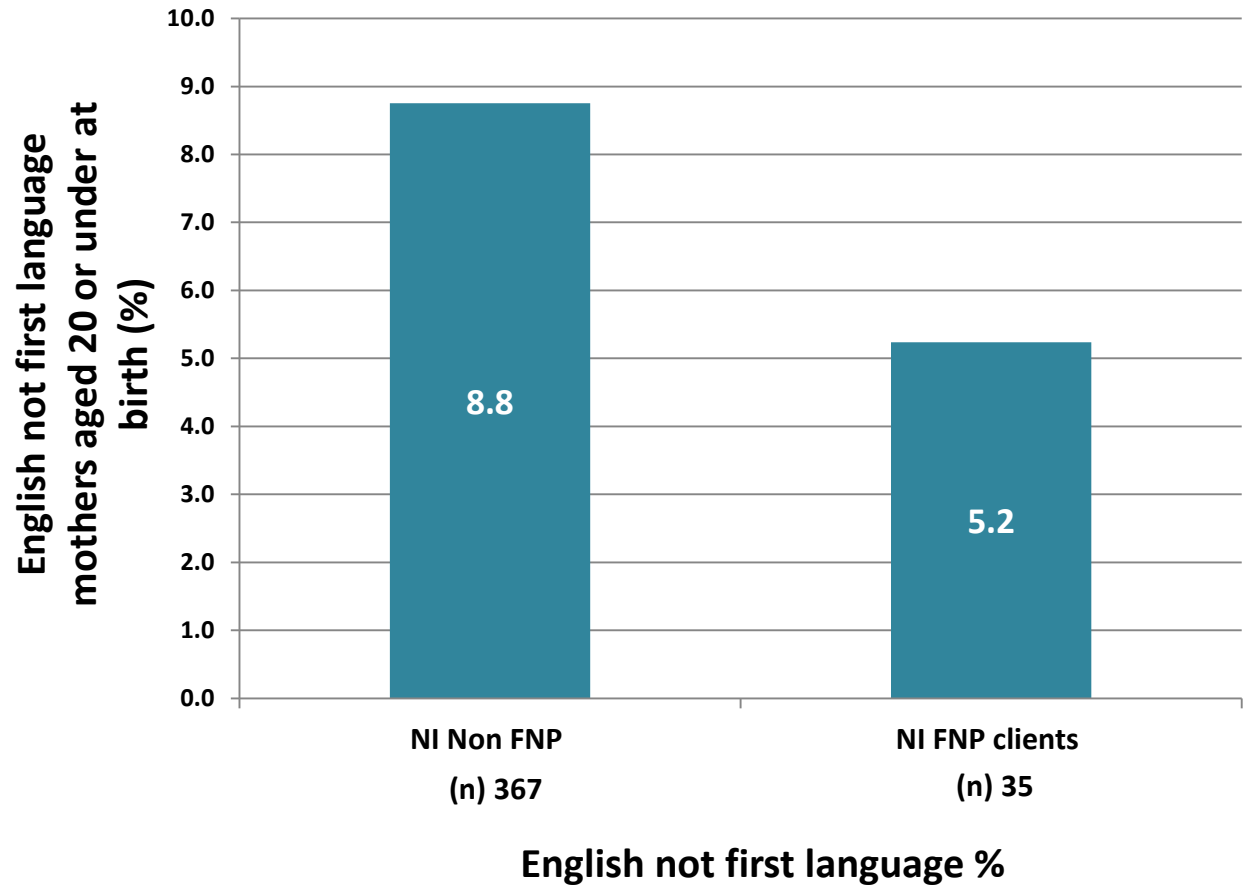
2014 – 2018

(Data quality pre 2014 less reliable)



ENGLISH

Not first language



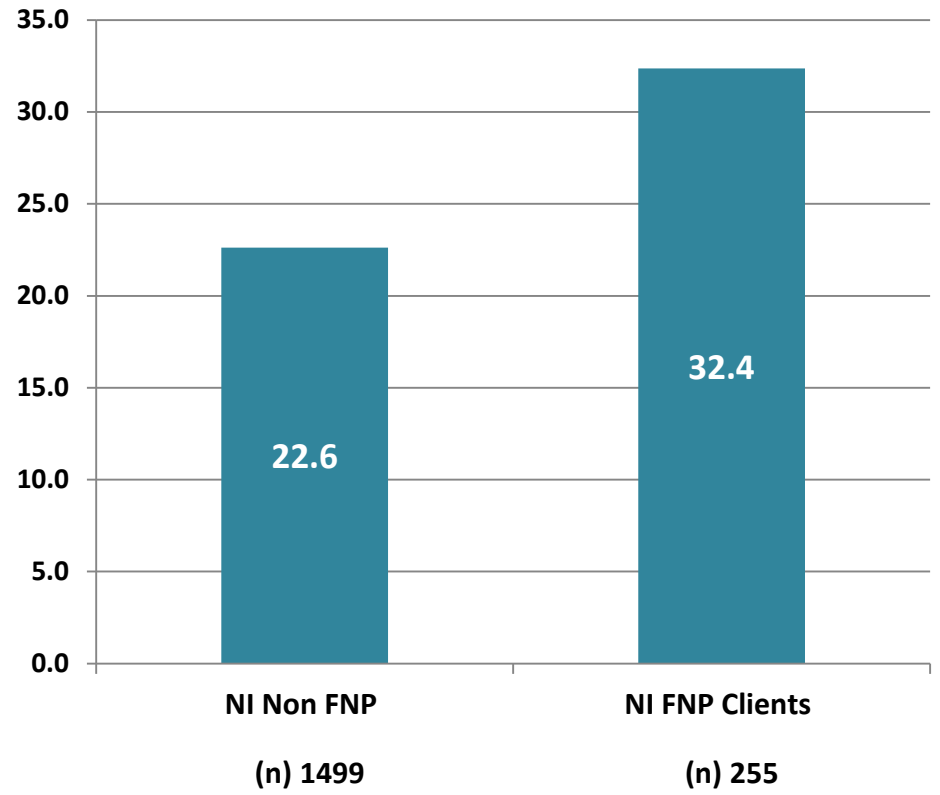
Client Profile - NIMATS

2012 – 2018



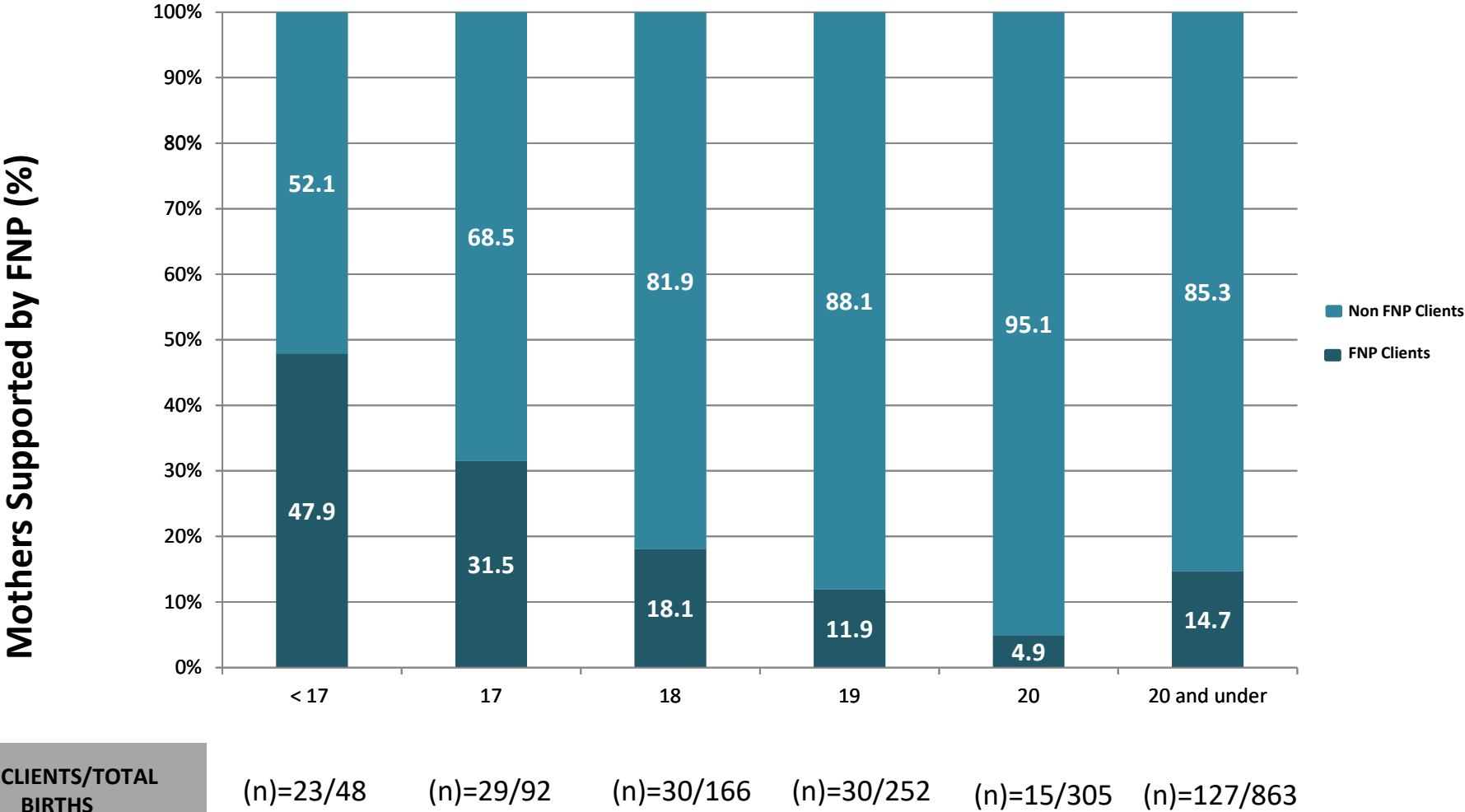
One Parent Families

One Parent Families (%)
mothers aged 20 or under at
birth (%)



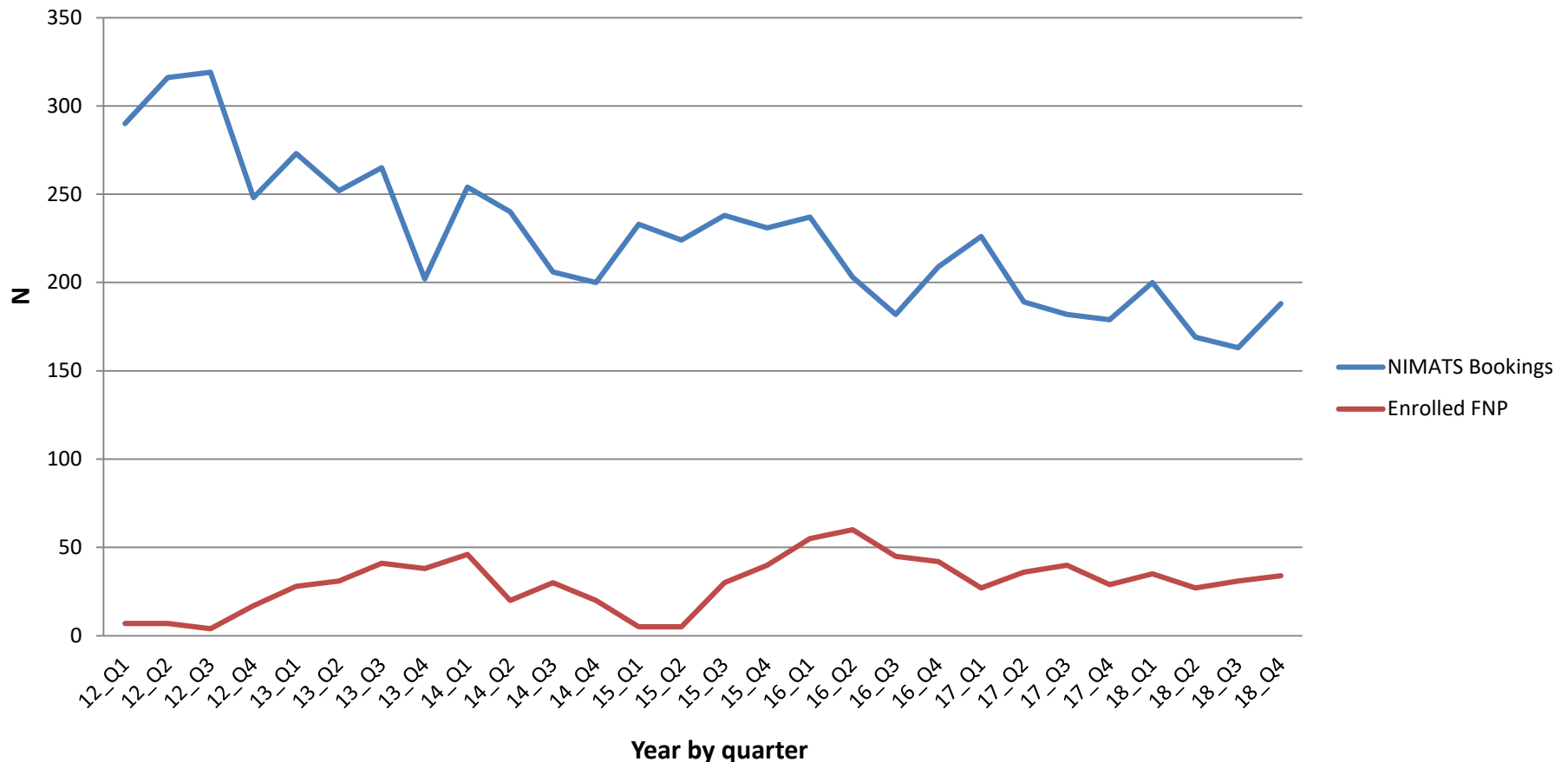
One parent families %

Proportion of young mothers FNP is able to support (2018 Births). NIMATS



Total clients enrolled on FNP as % of total NIMATS bookings

NIMATS bookings and total clients enrolled on FNP by quarter (2012-2018)



*First time mothers under 20

Deprivation

FNP Clients (2010-2018) **913**

Births to first time mothers ≤ 20 yrs NIMATS (2012-2018)

7442

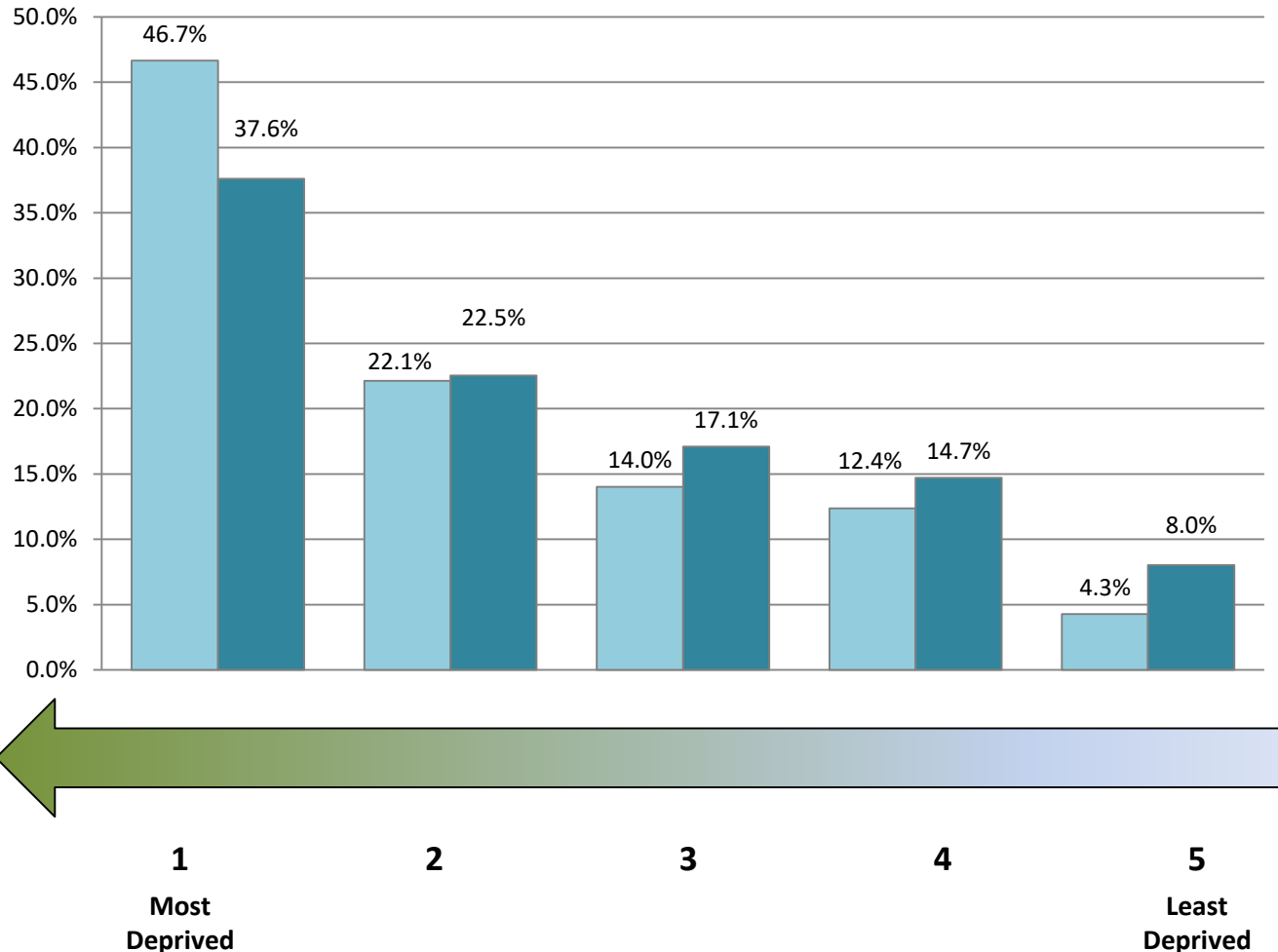


68.8% of FNP NI clients from more deprived areas based on NI 2017 Deprivation Measure at SOA



The 2017 teenage birth rate in the most deprived areas was **4 times** the rate in the least deprived areas.

34.5% of FNP clients are in areas **not** covered by SureStart



Programme Activity and Fidelity



Visit Content

CONTENT	Life Course Development	Family and Friends	Maternal Role	Personal Health	Environmental Health
---------	-------------------------	--------------------	---------------	-----------------	----------------------



Pregnancy goal	10-15%	10-15%	23-25%	35-40%	5-7%
Total content	12%	15.1%	27.7%	36.2%	9.0%



Infancy goal	10-15%	10-15%	45-50%	14-20%	7-10%
Total content	11.1%	13.4%	42.7%	21.8%	11.0%



Toddlerhood goal	18-20%	10-15%	40-45%	10-15%	7-10%
Total content	14.6%	14.3%	40.1%	19.2%	11.9%

Dosage

(mean % expected visits achieved)

Pregnancy



2018

All years

79.5%

79.5%

Infancy



63.6%

71.3%

Toddlerhood



61.4%

63.7%

Duration

(average minutes)

70.1

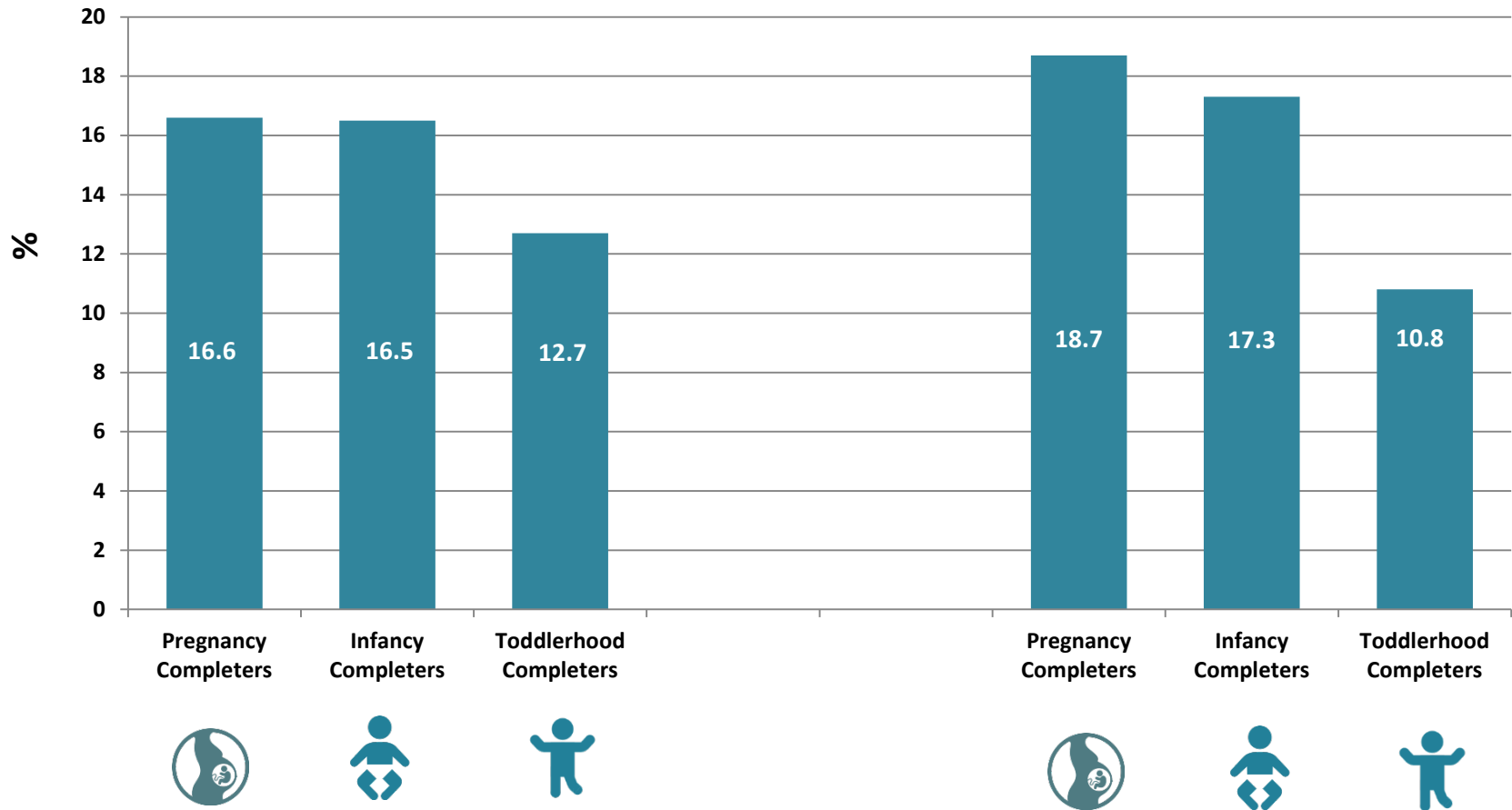
66.7

65.9

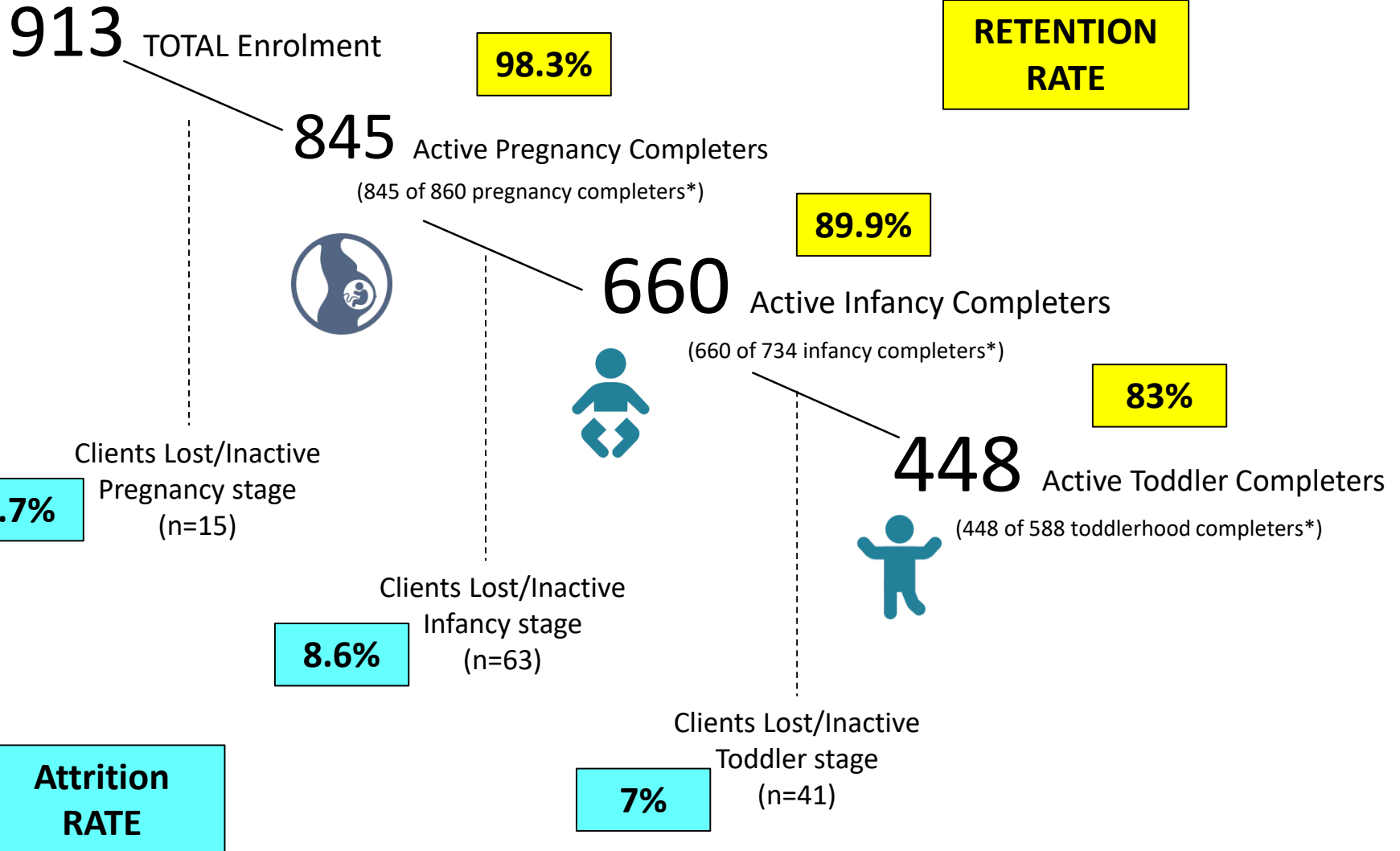
Partner Engagement



Grandparent Engagement



Client Retention at 31.12.2018



*Stage completers including active and inactive completers



Family Nurse
Partnership

Changing the world one baby at a time

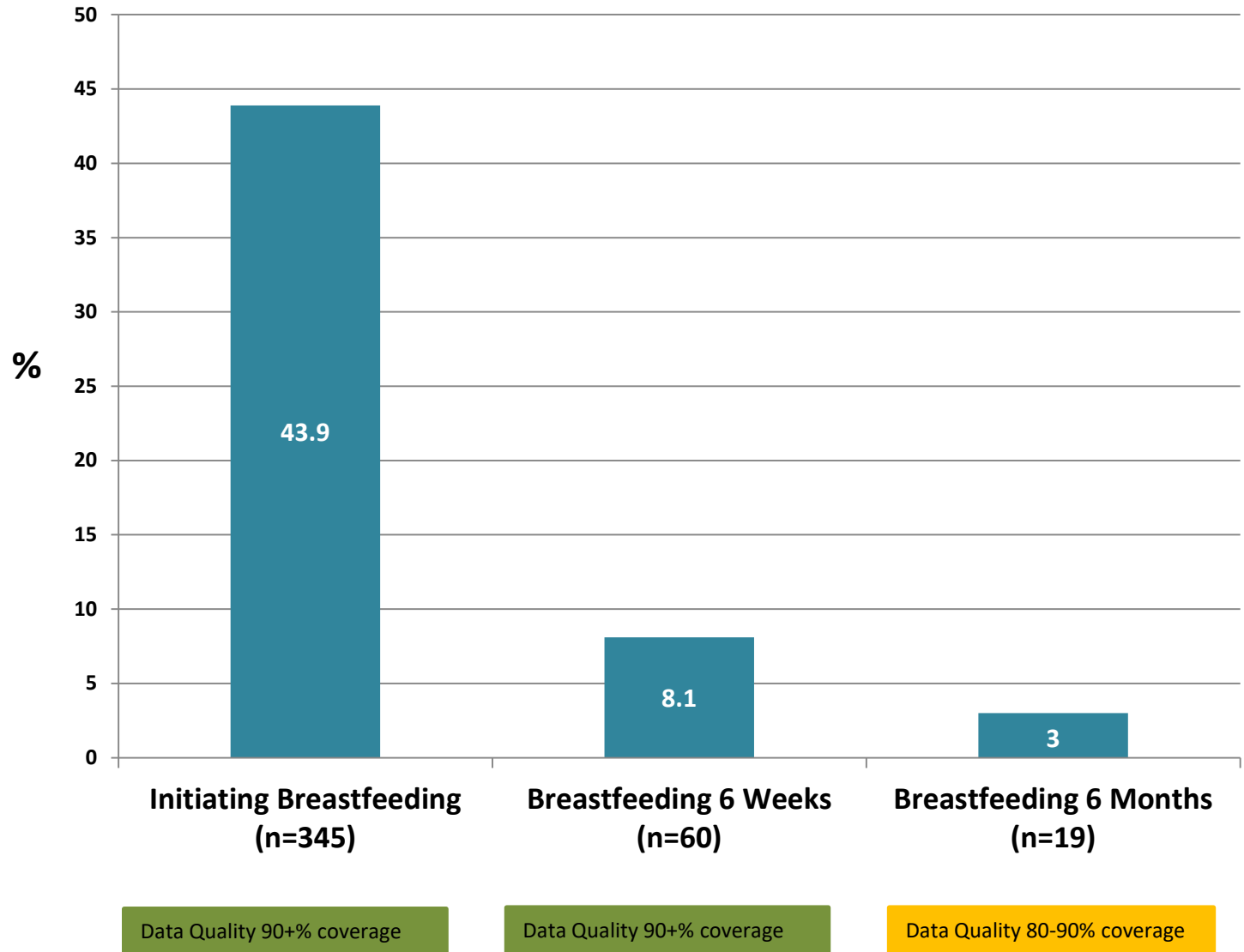
Section 4

Short Term Outcomes



Breastfeeding

(Initiation, 6 weeks and 6 months infancy)

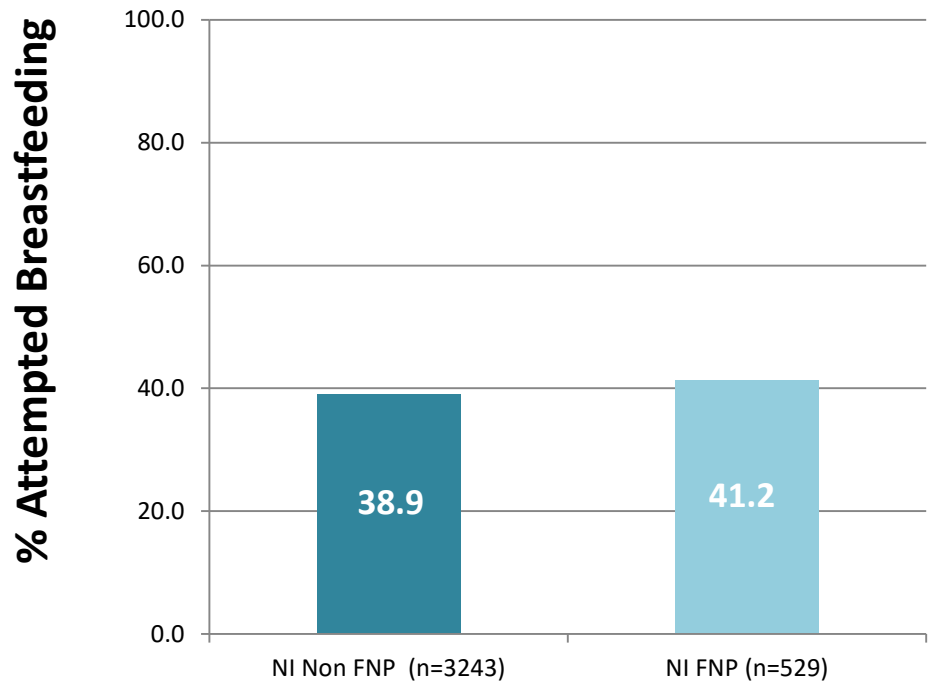


Attempted Breastfeeding 2015 - 2018

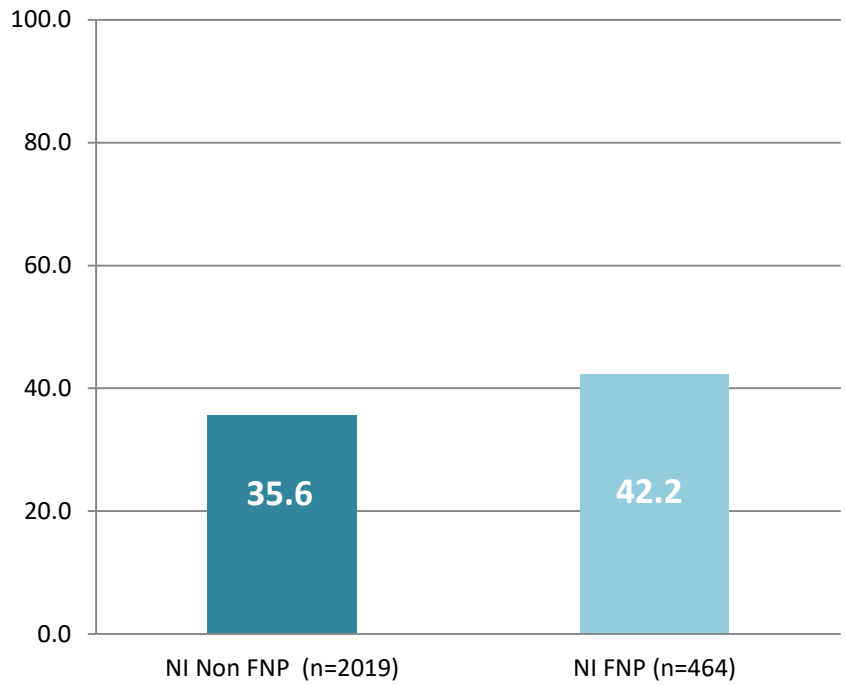


Source: NIMATS

Aged 20 and under



Aged 19 and under



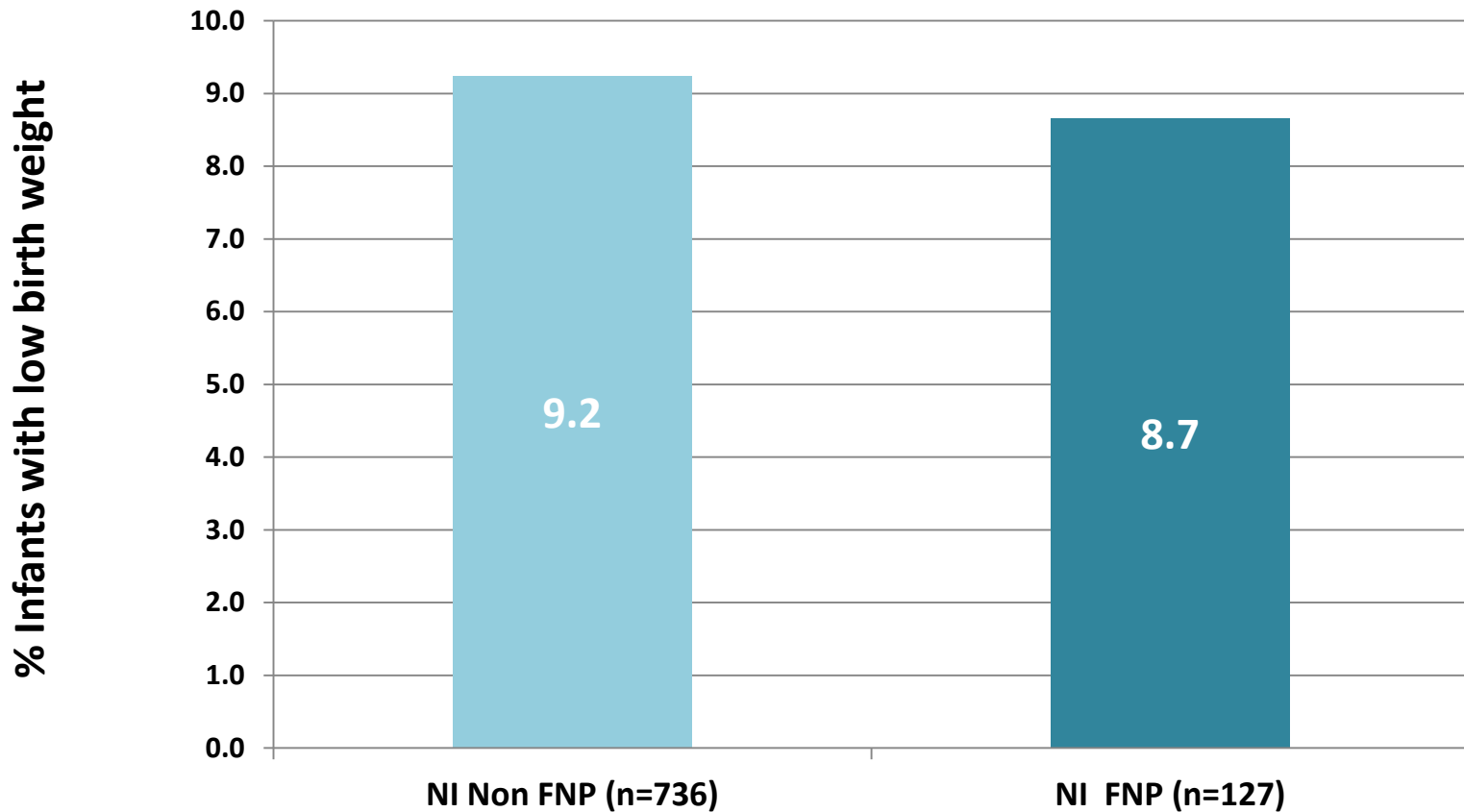
- Higher % attempted breastfeeding for NI FNP v's NI non FNP mothers (≤ 20 years and ≤ 19 years).



Birth Weight 2018

% Infants born to first time mothers aged 20 and under with low birth weight (<2.5KG) in 2018.

Source: NIMATS

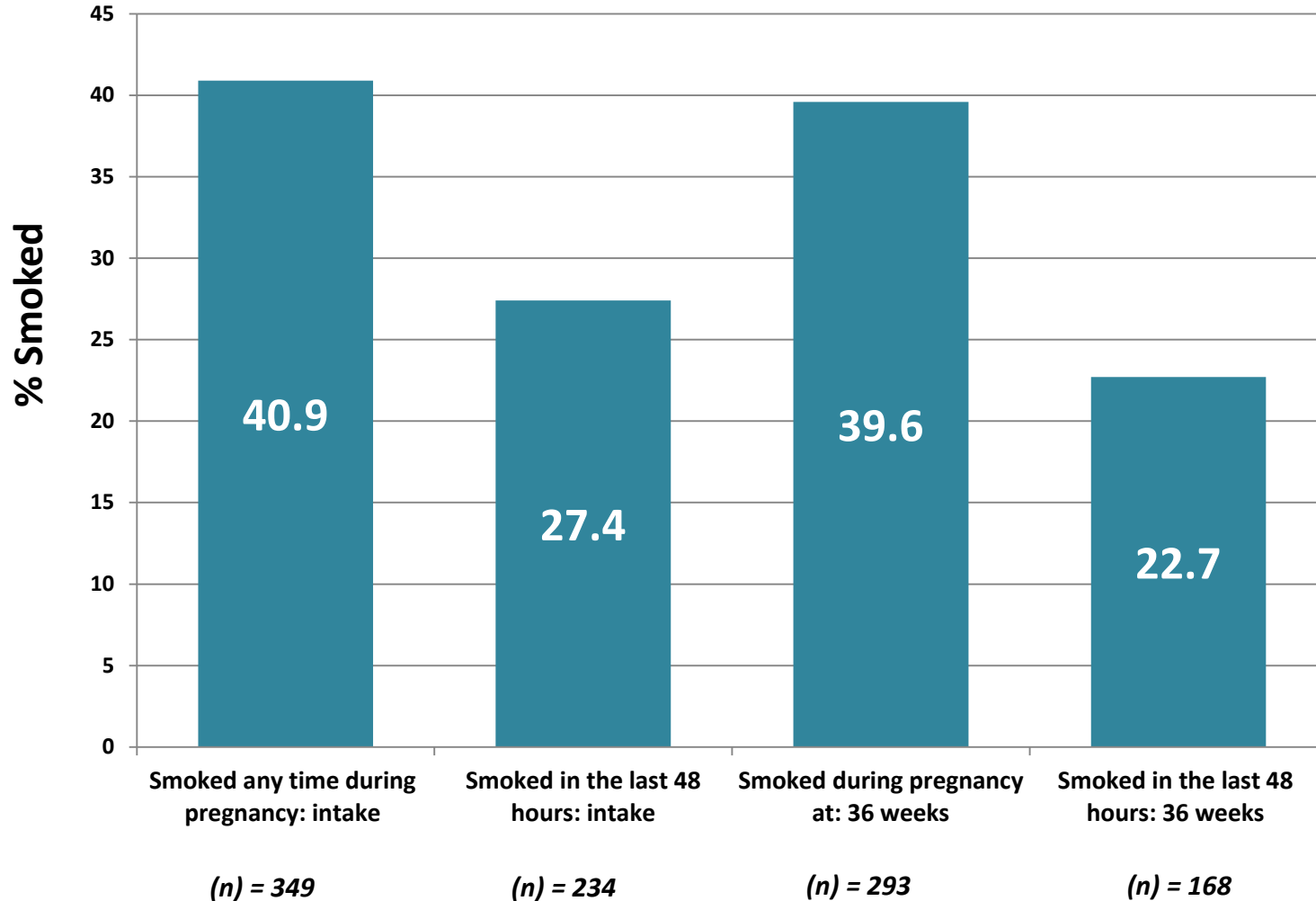




Tobacco Use

Intake

36 weeks pregnancy



% change in proportion smoking in last 48 hrs between intake and 36 weeks
-18%

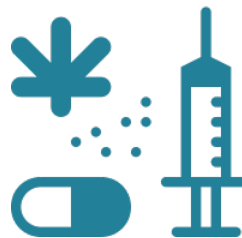
% of clients smoking fewer cigarettes in last 48 hrs at 36 weeks than at intake
+17.7%

Data Quality 90+% coverage

Data Quality 80-90% coverage

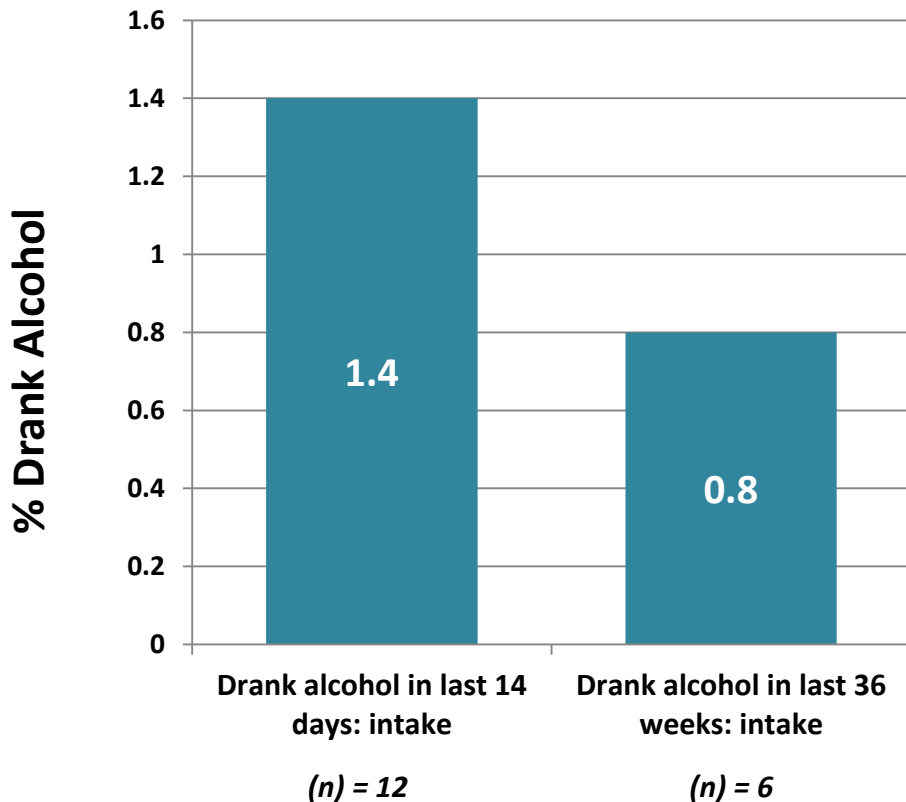


Alcohol



Drugs

Intake **36 weeks pregnancy**



Illegal Drug Use

Intake

0.1%

(n) = 1

36 weeks

0.1%

(n) = 1

Data Quality 90+% coverage

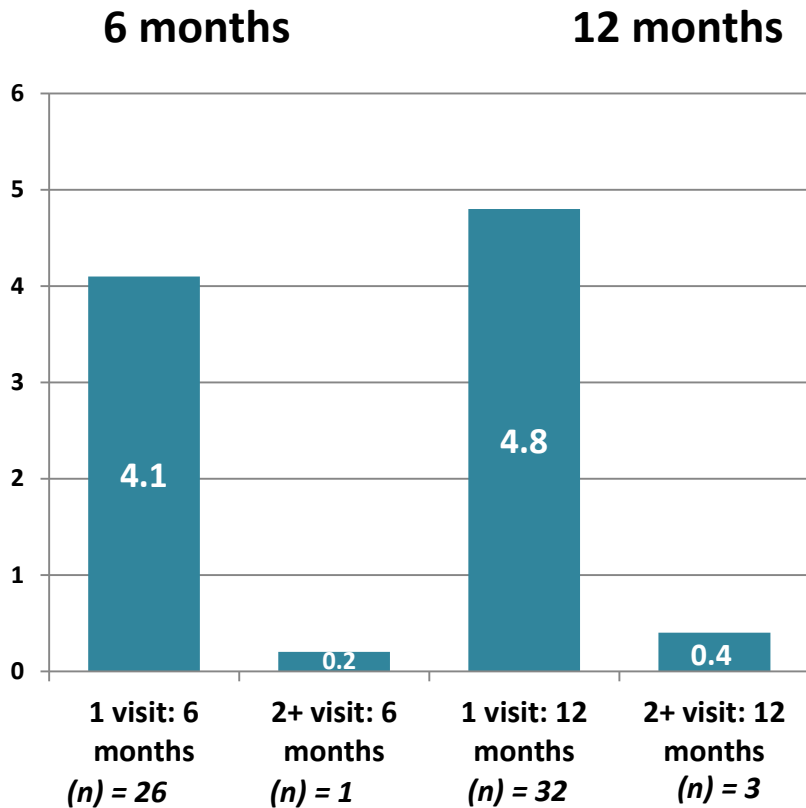
Data Quality 80-90% coverage

Data Quality 90+% coverage

Data Quality 80-90% coverage

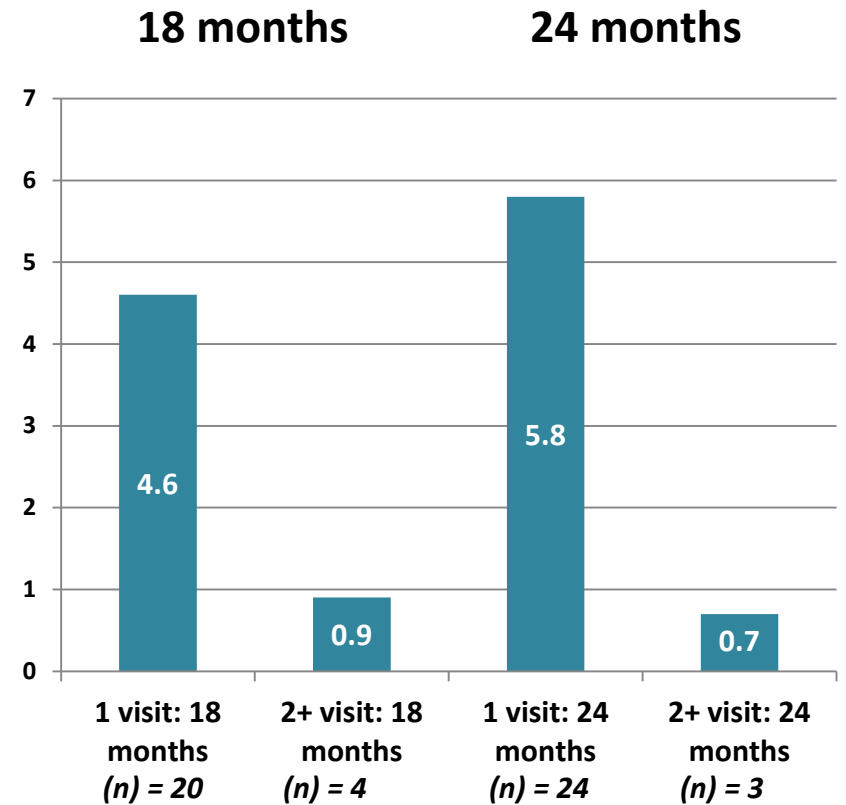


A&E Attendances Due to injury or ingestion



Data Quality 80-90% coverage

Data Quality 80-90% coverage



Data Quality 70-80% coverage

Data Quality 80-90% coverage



Hospital Admissions Due to injury or ingestion

6 months

1 Admission	2+ Admissions
<i>0.3% (N=2)</i>	0

12 months

1 Admission	2+ Admissions
<i>0.5% (N=3)</i>	0

18 months

1 Admission	2+ Admissions
<i>1.4% (N=6)</i>	<i>0.2% (N=1)</i>

24 months

1 Admission	2+ Admissions
<i>2.2% (N=9)</i>	0

Data Quality 80-90% coverage

Data Quality 80-90% coverage

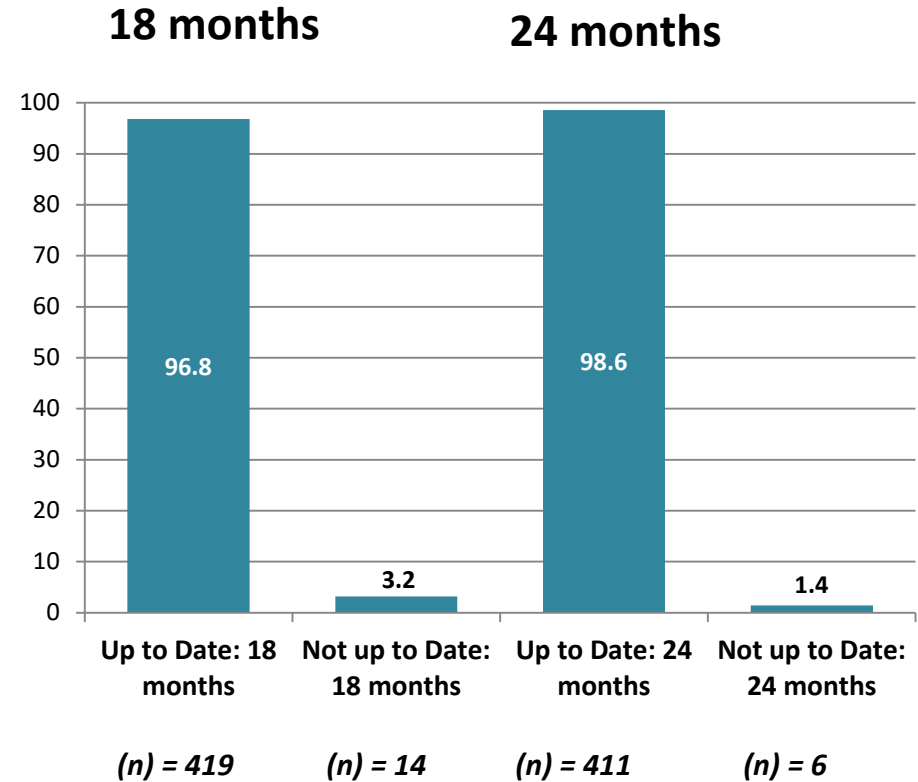
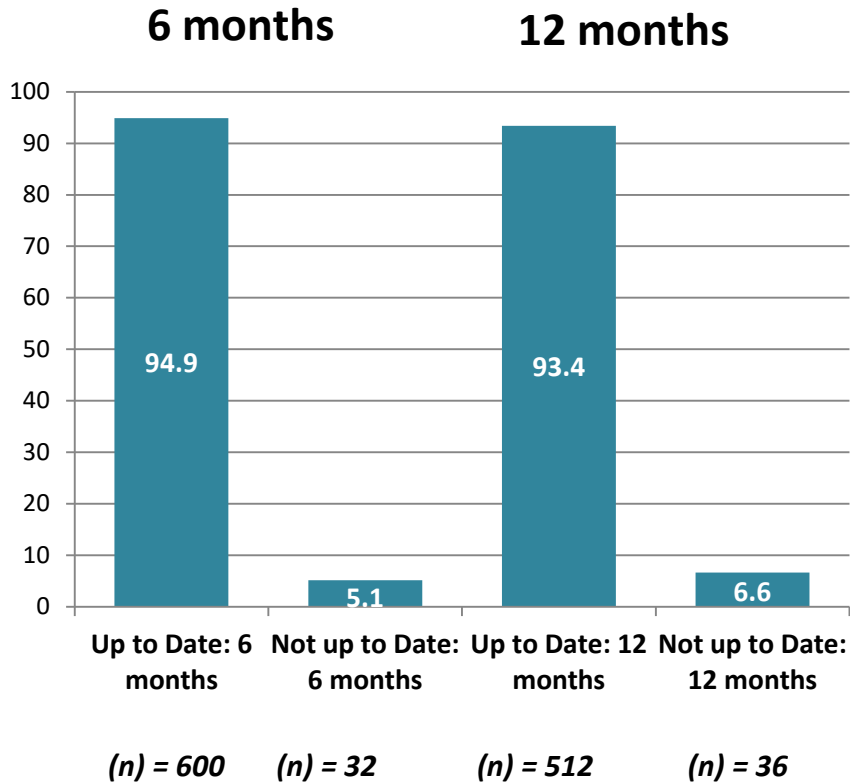
Data Quality 70-80% coverage

Data Quality 80-90% coverage



Immunisation Status

(Written Record and Self-Report)



Data Quality 80-90% coverage

Data Quality 80-90% coverage

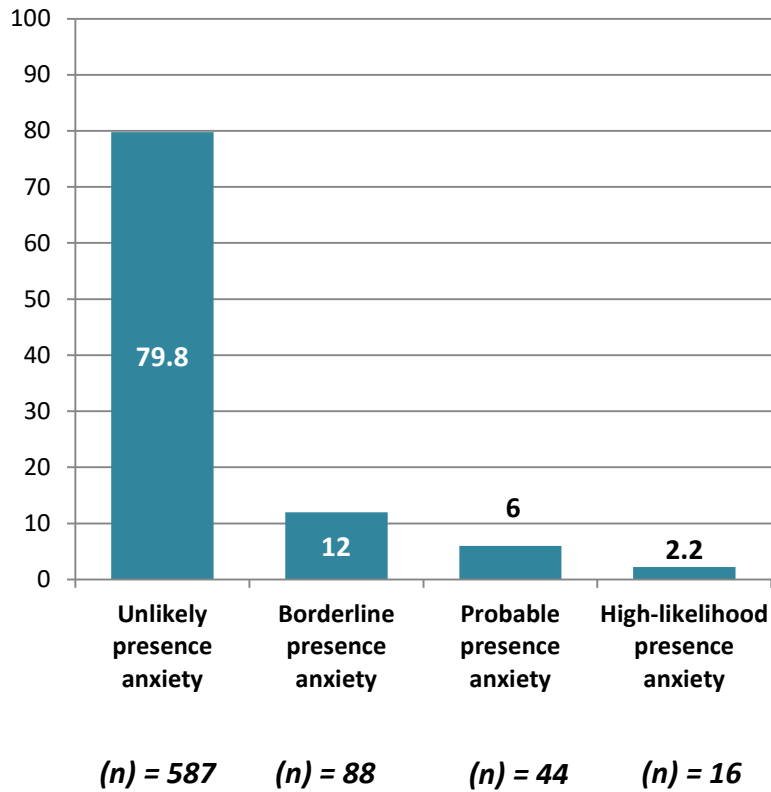
Data Quality 70-80% coverage

Data Quality 80-90% coverage

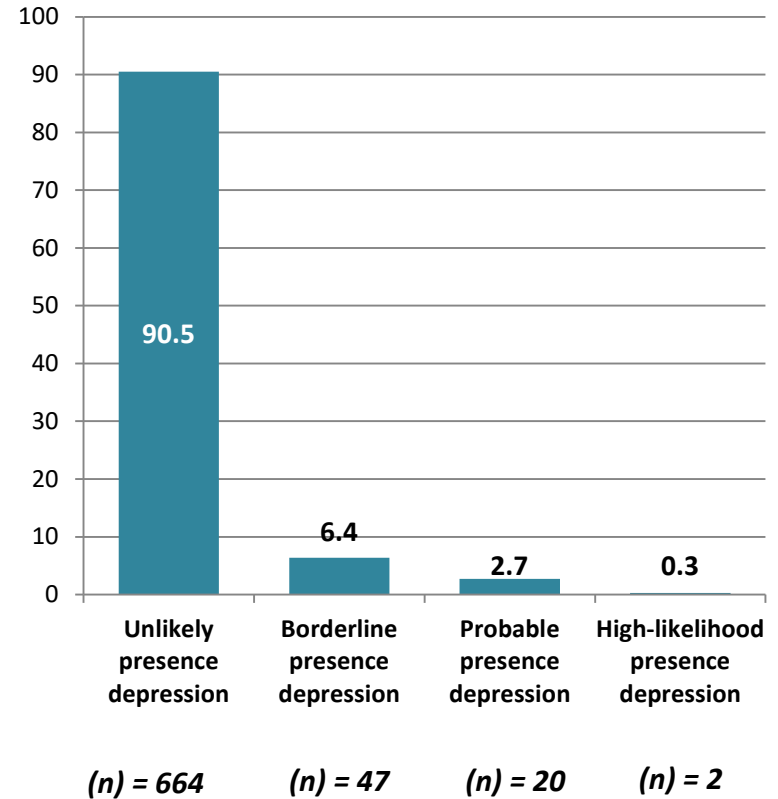


Anxiety and Depression (HADs)

36 Weeks Pregnancy



Data Quality 80-90% coverage



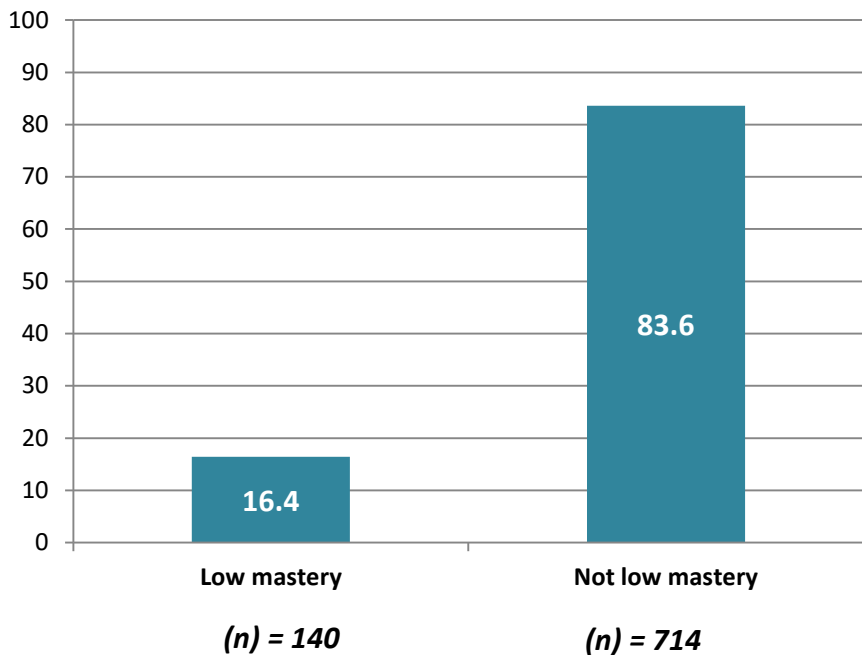
Data Quality 80-90% coverage



Mastery

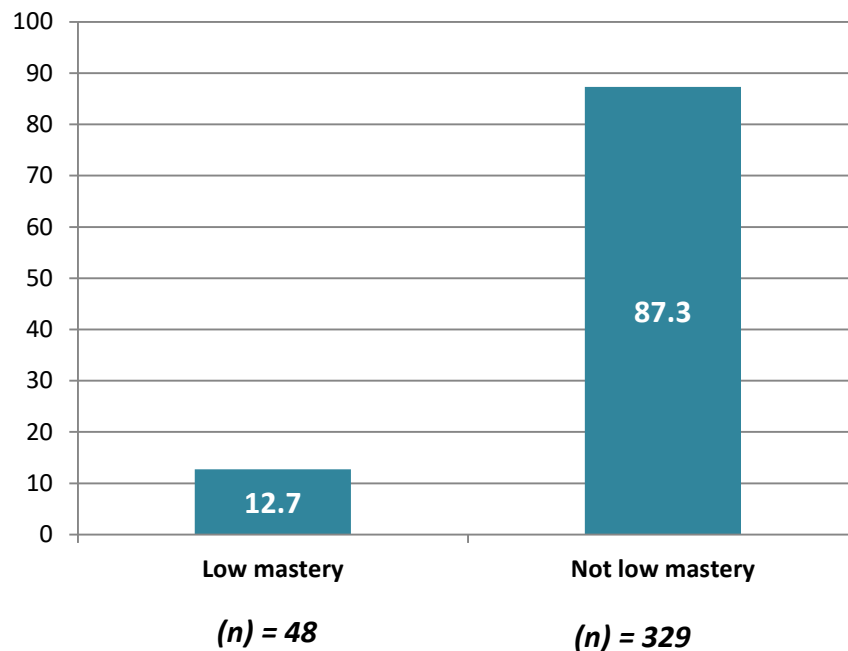
(Intake and 24 months)

INTAKE



Data Quality 90+% coverage

24 MONTHS



Data Quality 70-80% coverage



% change in number of clients with low mastery between intake and 24 Months = **-2.2%**

% of clients with higher mastery score at 24 Months than intake = **+45.3%**

Ages and Stages Questionnaire (Infancy)

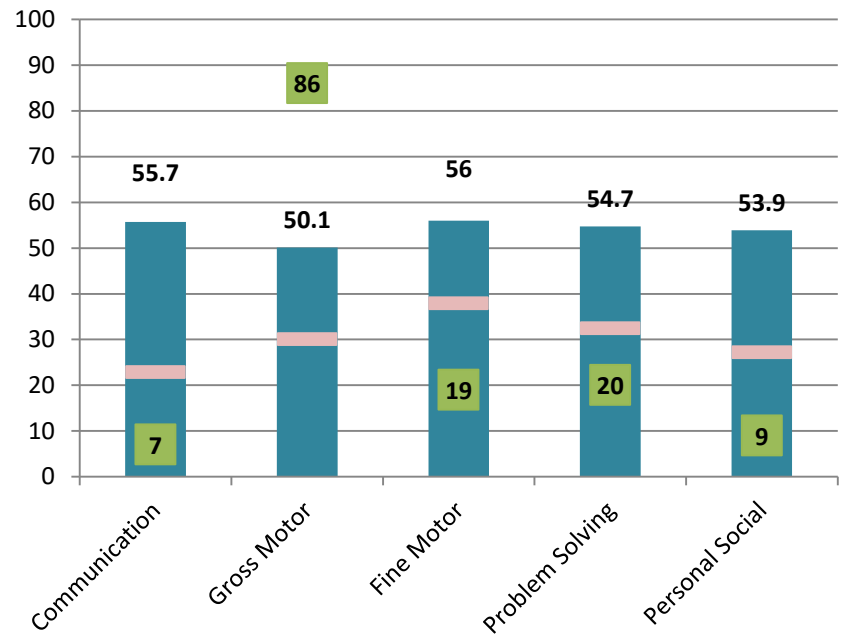
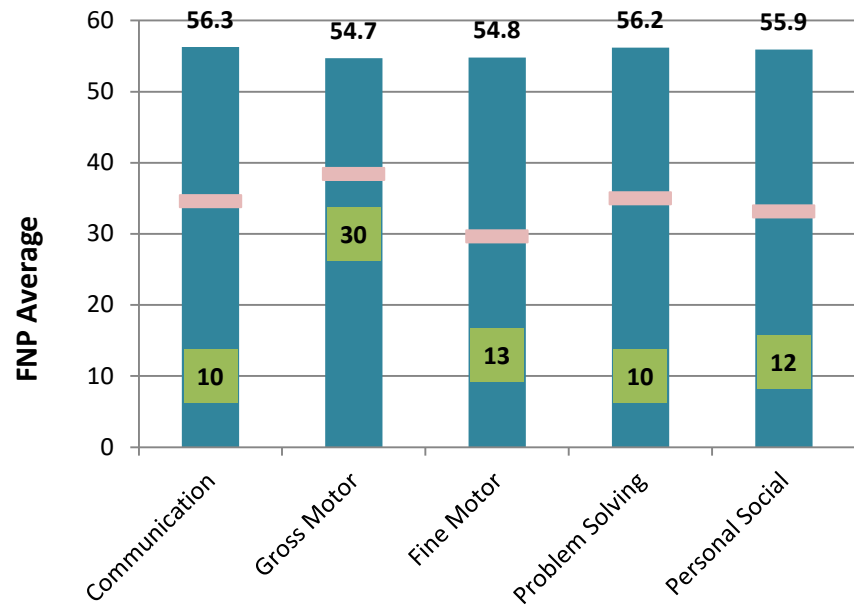
FNP Mean ASQ Scores

Consultation Cut-offs

(n) Clients Below Cut-Off

4 Months

10 Months



Data Quality 80-90% coverage

Data Quality 80-90% coverage

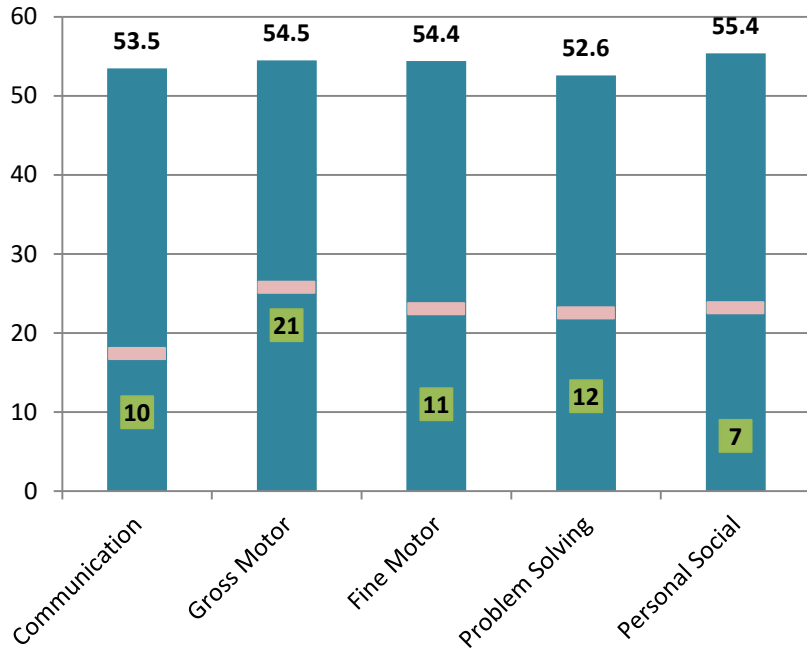
Ages and Stages Questionnaire (Toddlerhood)

FNP Mean ASQ Scores

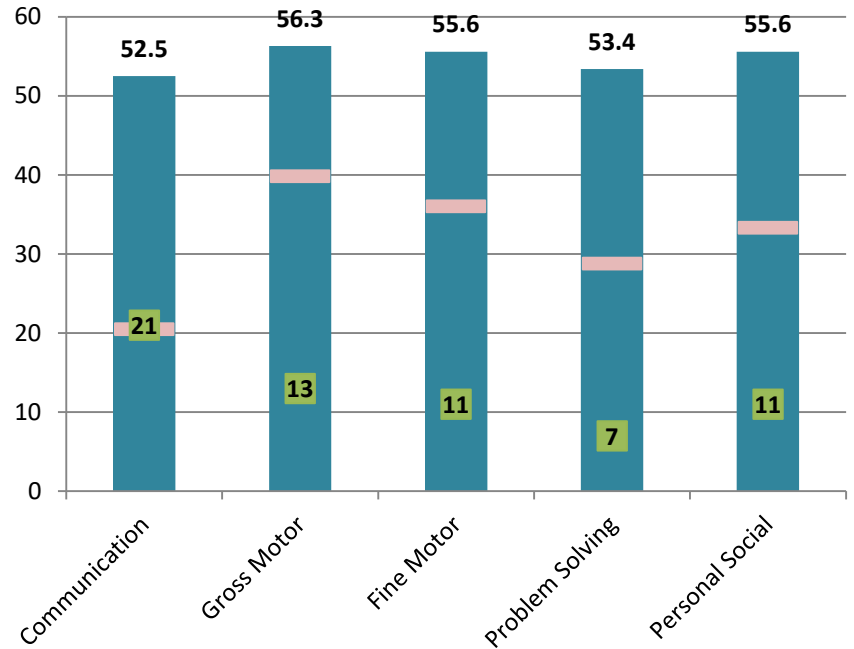
Consultation Cut-offs

(n) Clients Below Cut-Off

14 Months



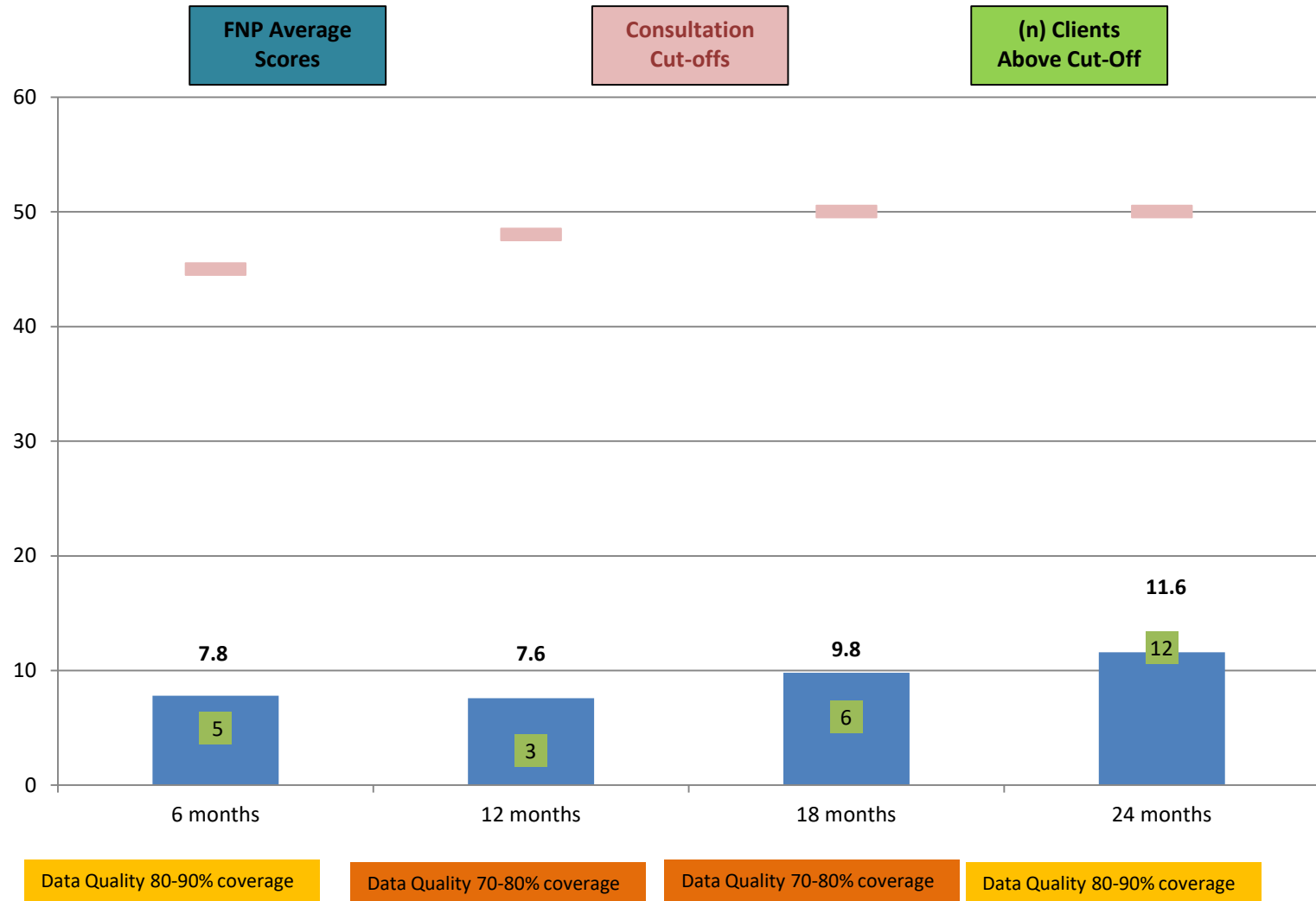
20 Months



Data Quality 70-80% coverage

Data Quality 70-80% coverage

Ages and Stages Questionnaire Social Emotional (ASQ-SE)



Programme Goal Summary

Enrolment and attrition			Programme content		
Indicator	Performance	Goal	Indicator	Performance	Goal
Recruited by 16 weeks	43.6%	60%	Pregnancy		
% enrolled who are offered FNP	72.1%	75%	Personal Health	36.2%	35-40%
Attrition (pregnancy)	1.7%	10%	Environmental Health	9.0%	5-7%
Attrition (infancy)	8.6%	20%	Life course development	12.0%	10-15%
Attrition (toddlerhood)	7%	10%	Maternal role	27.7%	23-25%
			Family & Friends	15.1%	10-15%
			Infancy		
			Personal Health	21.8%	14-20%
			Environmental Health	11.0%	7-10%
			Life course development	11.1%	10-15%
			Maternal role	42.7%	45-50%
			Family & Friends	13.4%	10-15%
			Toddlerhood		
			Personal Health	19.2%	10-15%
			Environmental Health	11.9%	7-10%
			Life course development	14.6%	18-20%
			Maternal role	40.1%	40-45%
			Family & Friends	14.3%	10-15%
Dosage		Expected Visits Achieved			
		Mean %			
Pregnancy (using gestational age)		79.5%			
Infancy		71.3%			
Toddlerhood		63.7%			

Graduations

